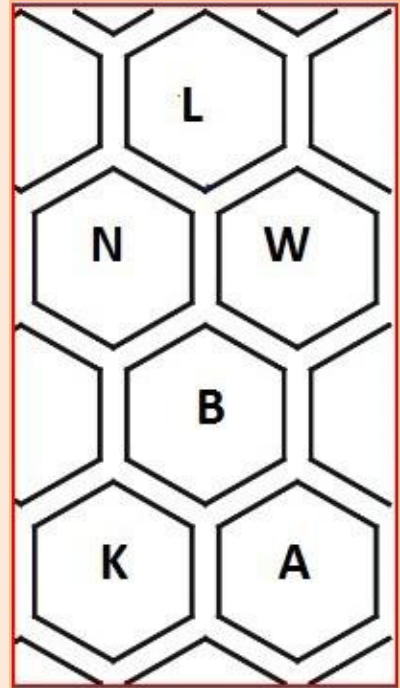


**The Lancashire  
and  
North West  
Beekeepers  
Association**



**Affiliated to:  
The British Beekeepers Association  
Lancashire and Cheshire B.K.A  
(Founded 1882. Reconstructed separately 1899)**

**Annual Report  
and  
Handbook 2015 – 2016**

**Registered Charity No. 506167**

## CONTENTS

	PAGE
OFFICERS OF LNWBKA CENTRAL COUNCIL	3
DETAILS	4
PRESIDENT'S MESSAGE	5
CHAIRMAN'S REPORT	6
ANIMAL & PLANT HEALTH AGENCY - Annual Bee Report 2015	7- 13
GOOD HUSBANDRY DAYS 2016	14
SEASONAL BEE INSPECTORS	15
EXHIBITIONS OFFICER'S REPORT	16
LANCASHIRE HONEY SHOW RESULTS	17-19
SOUTHPORT FLOWER SHOW	20
TREASURER'S REPORT	21
LNWBKA CONSOLIDATED INCOME AND EXPENDITURE	22
CENTRAL COUNCIL INCOME AND EXPENDITURE	23
MEMBERSHIP SECRETARY REPORT	24
EDUCATION AND EXAMINATIONS REPORT	25 -26
BRANCH REPORTS	27 - 44
PRACTICAL INFORMATION	45
LOCAL AND NATIONAL EVENTS 2016	46
INTERNATIONAL MARKING COLOURS	46
RECIPES	47-50

**THE LANCASHIRE AND NORTH WEST**  
**BEEKEEPERS ASSOCIATION**

Registered Charity No.506167 (founded 1882)

**PRESIDENT**

Mrs Barbara Roderick

**HONORARY LIFE MEMBERS**

Mr R Dowson  
Mr AA Gillett  
Mr E Hill  
Mr J McCann  
Mrs D Todd  
Mr B Poole

**CENTRAL COUNCIL**

Chairman	Mr Michael Gardner,
Vice Chairman	Mr John Zamorski,
Hon. General Secretary	Mr Martin Smith,
Hon. Treasurer	Mrs Barbara Farbon,
Hon. Exhibitions Officer	Miss Hazel Smith,
Hon. Education Officer	Mrs Janet Murray
Hon. Exam Secretary	Mr Brian Forster
Disease Liaison Officer	Mr Iain Molyneux.
Hon. Handbook Editor	Mrs Barbara Farbon,
Hon. Webmaster	Mr Mark Oakley,
Hon.Membership Sec.	Mr Anthony Lee
Independent Examiner (audit)	Mr Ray Dowson
Co-opted Members	Mr Ray Dowson, Mr John McCann, Mr Arthur Gillett

**DELEGATES TO OTHER ORGANISATIONS**

The British Beekeepers Association	Mr Ray Dowson
The National Honey Show	Mr Martin Smith, Mr Ray Dowson, Mrs Margaret Murdin
BeeCraft	Mr Edward Hill
B.D.I	Mr Edward Hill

**THE LANCASHIRE AND NORTH WEST  
BEEKEEPERS ASSOCIATION**

Lancashire and North West Beekeepers Association Governing Document amended 16<sup>th</sup> March, 1985, 12<sup>th</sup> March, 1997 and March 2010

**LEGAL AND ADMINISTRATIVE DETAILS**

Status	Registered Charity
Charity Number	506167
Patrons	None
President	Mrs B Roderick
Secretary	Mr MP Smith, 137 Blaguegate Lane, Lathom, Skelmersdale, WN8 8TX
Independent Examiner (audit)	Mr Ray Dowson
The Association's Bank	The Royal Bank of Scotland, 41 Liverpool Road North, Burscough Bridge, Ormskirk, L40 0SA
Trustees	President Mrs B Roderick Chairman Mr M Gardner Treasurer Mrs B Farbon Secretary Mr MP Smith

**COMMITTEES' REPORTS**

See Association reports in this Handbook

**OBJECTIVES OF THE SOCIETY**

The primary objectives of the charity are:-

- To promote and further the craft of beekeeping in Lancashire and the North West
- To advance the education of the public in the importance of bees in the environment.

**YEARLY REVIEW OF ACTIVITIES**

See reports in this Handbook

**FINANCIAL POSITION OF THE SOCIETY**

See Treasurer's Report published in the Association's Year Book for 2015

## **A MESSAGE FROM THE PRESIDENT**

Welcome to this our new beekeeping season in 2016. Beekeepers are always optimists and we thought that 2015 was going to be the best year ever. How wrong that proved to be with many people saying it was in fact the worst year they could remember. One, a beekeeper since 1984 had, for the very first time, no spring/early summer honey at all; removed the first crop in August, unprecedented.

We saw all areas of education continuing to expand with record numbers studying for the Modules and working towards the Husbandry assessments. Even though some failed the exams and some didn't take the exams, our beekeeping knowledge is improving at all levels. It is the studying that is important so it would be wrong just to focus on exam results so carry on with the studying and MAYBE decide whether or not to take the exam later!

Our County has a coordinated approach to studying with branches opening up study groups to the whole of the County. Branch education coordinators are working together to keep up this momentum as education about our wonderful honeybees is central to our beekeeping.

Do make use of this resource, our Handbook, support your branch and do think of visiting your nearby neighbours. Look at their programme and give their secretary a ring to confirm time and place and I know you will be made very welcome. Remember you are a member of Lancashire, not just your local branch.

May all your supers be full and your bees be gentle in 2016!

**Barbara Roderick**  
**President**  
**Lancashire & North West Beekeepers Association**

## **CHAIRMAN'S REPORT for 2015**

In my previous report I closed it hoping for at least one of: low varroa, lots of sun, honey and/or bees. Be careful what you wish for! I hope you all fared better than I did.

My varroa counts were certainly down on previous years but I think that was more to do with the amount of swarming the bees did. That wouldn't have been too bad if the subsequent queens had got mated and/or they'd gifted me a surplus of honey, neither of which were forthcoming.

That was 2015 though and as a group I think most of us tend to look forwards so, fingers crossed, this year I'd like at least two out of four please.

We had a couple of fantastic speakers at our convention this year. Gareth John made a very logical and reasoned case for, as he calls it, "bee-centric" beekeeping and Phil McAnespie a Scottish beekeepers view of producing a honey crop and what pollen is all about. Despite their differing viewpoints the debates were open and very interesting.

A high point of the convention is always the distribution of the examination certificates. The number that are handed out each year really is magnificent. Well done to you all.

Attendance at the convention wasn't great so if you have any suggestions please let your branch representatives know so that they can air them at the next meeting.

I'd also like to draw everyone's attention to our Honey Show, details of which will be circulated soon. This is a good opportunity to show off your wares, commiserate/celebrate the year with members from other branches and participate in a bit of inter-branch rivalry .. we can't let Ormskirk win everything!

Finally I'd like to thank all of those who make the Council tick: Derrick, Brian, Tony, Mark, Ed, John, Hazel, Ian, Ray, Martin, the two Barbaras ... and the branch representatives.

Michael Gardner

Chairman Lancashire & North West Beekeepers Association



## **National Bee Unit. Northern Region Annual Bee Report - 2015**

(Covering Cheshire, Greater Manchester, Merseyside and the Wirral, Lancashire, Cumbria, Tyne and Wear, County Durham and Northumberland)

### **Foulbrood Disease**

There have only been 3 reported cases of notifiable disease in the Northern region in 2015:

-

### **American Foulbrood (AFB) has been found in the following 10km square: -**

- SJ 36 Chester – 1 colony, 1 apiary (South Cheshire)

### **European Foulbrood (EFB) has been found in the following 10km squares: -**

- SJ 79 Chester-Le-Street, 2 colonies, 1 apiary (Durham) – colonies destroyed
- SJ 38 Lake District – 1 colony, 1 apiary (South Lakes) all colonies in apiary (4) destroyed

As the National Bee Unit protocol, we have completed 3 km inspection sweeps around the infected apiaries and no further disease was found.

If you have apiaries in any of the above areas, can you please make sure they are registered on BeeBase.

### **Varroa**

*Varroa* levels, particularly later in the season have reached high levels in most unmanaged colonies.

As last season, all my Seasonal Bee Inspectors were reporting damaged/stunted adult bees and deformed wings (Deformed Wing Virus) while undertaking inspections in late summer, many beekeepers have found it difficult to control the *Varroa* levels in their colonies.

Please be aware that most colonies have been rearing brood in the winter period due to the warm weather, this can lead to high mite levels in spring. If the levels are not controlled, populous colonies can collapse in the summer.

For more information on managing *Varroa*, please visit our website [www.nationalbeeunit.com](http://www.nationalbeeunit.com) and please read the 'Managing *Varroa*' leaflet produced by the National Bee Unit. This can be downloaded from the website.

Please remember *Varroa* and its associated viruses are still the biggest killers of honeybee colonies here, in Europe and throughout the World. **Regular *Varroa* monitoring is a very important part of your *Varroa* management and should be completed at least 3 or 4**

times throughout the year (winter, spring, mid-summer and late summer); action must be taken if mite levels are near or over the injury or economic threshold limit at any time. Do not rely on physical deformities (Deformed Wing Virus [DWV], damaged, stunted/small/deformed adult bees) in adult bees to diagnose *Varroosis*, it is generally too late at this point for colonies to recover

### **Chronic Bee Paralysis Virus (CBPV)**

Chronic Bee Paralysis Virus was prevalent again in 2015, particularly in commercial beekeeper's apiaries. This viral disease of adult honeybees is thought to lie dormant in most honeybee colonies and often shows no effect in the colony. However, when symptoms such as crawling and/or trembling bees, sometimes with shiny, hairless or bloated abdomens become apparent then the disease can spread very quickly through the colony and result in rapid depopulation of adult bees. The disease only occurs in large 'mature' colonies with drones and can often be seen in the drones first. In severe cases, masses of dead bees may be found on the hive floor and/or on the ground at the front of the hive and sometimes the colony may not survive. It is thought that the spread of the virus within the colony is exacerbated by overcrowding and confinement in periods of poor weather, though cases were being reported right through the summer period. It is also thought that disease can transfer through contact, so good hygiene practises are suggested (i.e. washing gloves and hive tools between inspecting each colony). Re-queening from non-susceptible stocks is also suggested to further reduce the incidence. In some cases this disease can be confused with spray poisoning. For additional information on this and other viruses please see the NBU leaflet 'Common Pests, Diseases and Disorders of the Adult Honey Bee' and the recently produced fact sheet "Chronic Bee Paralysis Virus". This is available as a pdf download at: [www.nationalbeeunit.com](http://www.nationalbeeunit.com).

### **Approved Bee Medicines**

For your assistance, I list the current Veterinary Medicines Directorate (VMD) authorised bee medicines below. Please check the VMD website regularly ([www.vmd.defra.gov.uk](http://www.vmd.defra.gov.uk)) or ring the VMD to confirm that products are still legal and currently in use.

Treatments are approved for use in honeybee colonies in this country by the VMD (Veterinary Medicines Directorate) and not by the National Bee Unit.

As you can see from the table, there is now an approved/legal oxalic acid (OA) treatment available for use by beekeepers in this country. Please note, this is the **only** UK product (other than other OA products obtained under the EU Cascade system) that can be used for OA trickling or sublimation. It is currently available from most beekeeping suppliers in 10, 50 and 100 colony packs.

Please note, it is a legal requirement to record all hive treatments used, i.e. when and where purchased, type and amount of treatment or product used, batch number and expiry date if applicable, when applied and when withdrawn. The product, again if applicable, should be disposed of as per the manufacturers' instructions. This information should be kept for 5 years.



The Veterinary Medicines record card can be found on BeeBase at <https://secure.fera.defra.gov.uk/BeeBase/index.cfm?pageid=309>

Other treatments from Europe are available for use under the 'Cascade' system. Please visit the VMD website for information and import regulations, at [www.vmd.defra.gov.uk](http://www.vmd.defra.gov.uk)

Product	Active Substances
<b>Apiguard</b> Gel (25% Thymol) for Beehive Use	Thymol
<b>Apilife Var Bee</b> -Hive Strip for Honey Bees	Thymol (8g) Camphor Recemic (0.39g), Eucalyptus Oil (1.72g), Levomenthol (0.39g)
<b>Apistan</b> strips 10.3% w/w Bee Hive Strip= 834mg per strip	Tau Fluvalinate
<b>Bayvarol</b> Strips 3.6 mg	Flumethrin
<b>Thymovar</b> 15g Bee-hive strips for Honey Bees	Thymol
<b>MAQS</b> Beehive strips 95% w/w	Formic Acid - 68.2g of Formic acid per strip
<b>API-Bioxal</b> , 886mg/g of powder for hive use	1g contains Oxalic acid dihydrate 886mg (equals 632.70mg of anhydrous)
<b>Please note: Fumidil B is not licensed for use in the UK</b>	

### The 2015 honey season

Reports from beekeepers in the Northern region indicate that 2015 has been a poor honey gathering season, particularly in the far North.

The Northern region average yield was well down on last season at around 10 to 30lb per honey producing colony and a lot of beekeepers produced no excess honey. Some beekeepers reported a higher yield 30 to 50lb this was mainly due to their proximity to the high nectar yielding plants, Willow Herb and Himalayan Balsam. The Heather crop average was around 10 to 30lb per colony.

Honey prices increased slightly, flower honey retailing between £3.50 to £5.50 per lb, dependent on demand and location.

### Staffing

Stewart Beattie, my Seasonal Bee Inspector for Cumbria and North Lancashire decided to retire at the end of the 2015 season.

Stewart has been, without a doubt, one of the best Seasonal Bee Inspectors the Northern Region has ever had and will be hard to replace.

He had great ability to communicate with beekeepers at all levels, had a great eye for disease and a fantastic work ethic. He will be greatly missed by both beekeepers and his

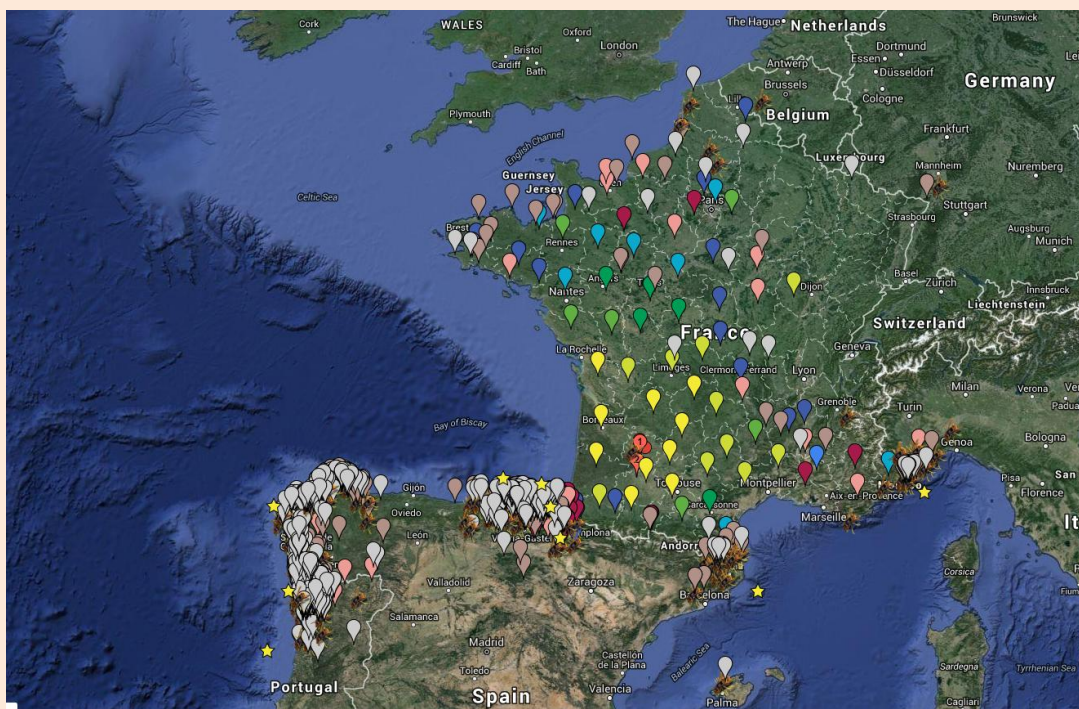
colleagues.

On a more positive note, we recruited two new Seasonal Bee Inspectors in 2015, Graham Royle to cover the Cheshire area and Mark McLoughlin for the Wirral/Liverpool area.

We should hopefully be recruiting to fill Stewart Beattie's post in early 2016.

### **Update on Asian hornet and Small Hive Beetle in Europe**

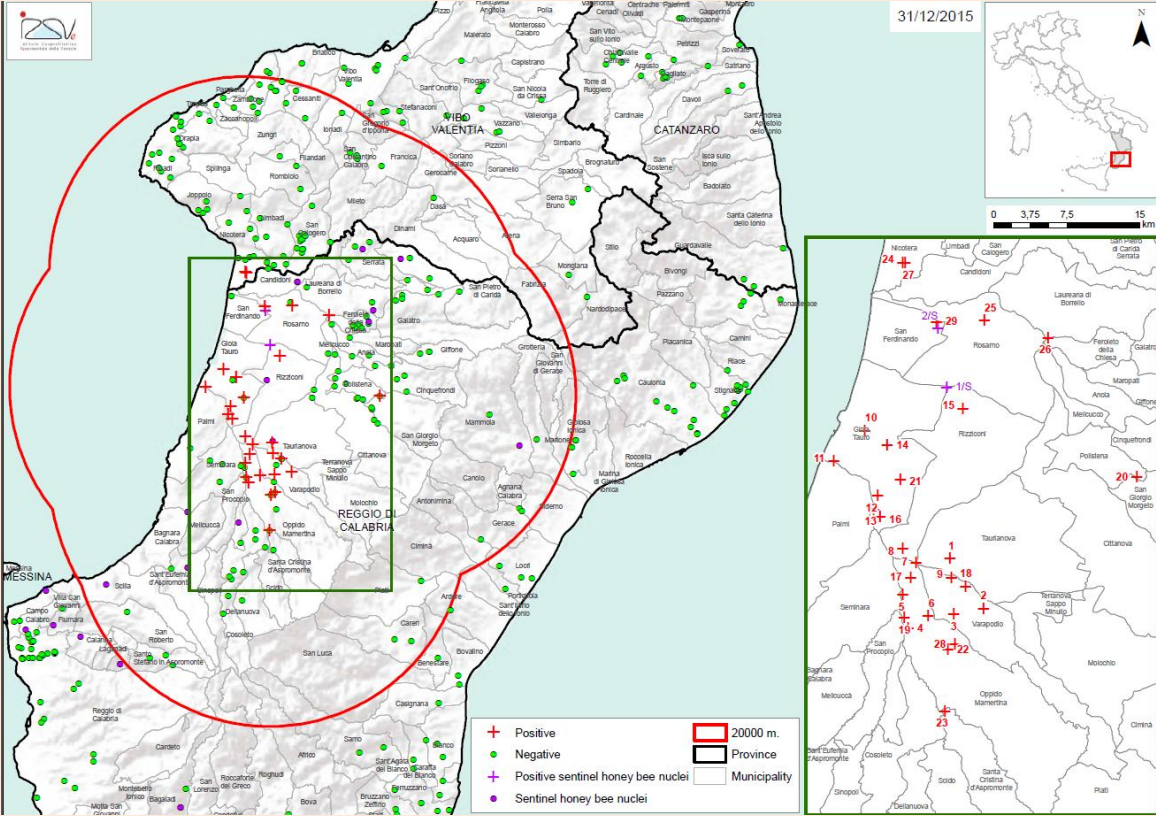
The Asian hornet, *Vespa velutina*, continues to spread through North West France and this year has been reported in and around the area of Calais. It is of serious concern that this pest could make its own way or hitch a ride across the English Channel into the UK. With the amount of traffic entering the UK from Europe the Asian hornet could arrive almost anywhere, though the South and South East coasts remain most at risk. Contingency plans have been put into place and all attempts will be made to eradicate any incursion. However, to be successful, any developing nests established by fertile queens in spring must be located and destroyed before the next generation of queens is released. Beekeepers are at the forefront of surveillance for Asian hornet as it is quite likely to be observed hawking in front of bee hives, but any suspect sightings should be reported to the NBU and the Non-Native species secretariat (NNS) at [alertnonnative@ceh.ac.uk](mailto:alertnonnative@ceh.ac.uk). An identification sheet for the Asian hornet and details of monitoring traps are available as downloads from BeeBase. The open access Google map is regularly updated to show the continuing spread of Asian hornet in Europe. Note that not all nests and sightings in France are recorded but the white markers show new areas affected this year.



See <https://www.google.com/maps/d/viewer?mid=zQZZvCfJcXQo.k0cLRXyow4C0&msa=0>

Last year I reported on the detection in September of Small hive beetle (SHB) in South West Italy, near the port city of Gioia Tauro. For the rest of the year a rigorous inspection programme was instigated in Calabria and neighbouring regions. SHB was confirmed in 60 apiaries within the initial 20km protection zone and one in Sicily resulting from tracing of colonies moved there just prior to the first detection. All the colonies in the affected apiaries were destroyed (about 3,500 in total) and soil around the hives treated with insecticide.

Inspections were recommenced after winter and, perhaps surprisingly, no further colonies were found to be infested until mid-September this year. Since then and to 31<sup>st</sup> December 2015 SHB has been found in 29 apiaries, all within the 20km protection zone set up in Calabria last year (none within Sicily). A number of sentinel apiaries containing nucleus colonies have been set up in or near areas previously affected and adult beetles detected in two of them. The following map shows the situation for 2015 as of 31<sup>st</sup> December. A large number of apiaries in Sicily and the South of Italy have been inspected but no spread of SHB outside the initial area within the 20km protection zone has been detected



See <http://www.izsvenezie.com/aethina-tumida-in-italy/>

The NBU leaflet, 'The Small Hive Beetle – a serious threat to European apiculture' has recently been revised and is available as a download from BeeBase at [www.nationalbeeunit.com](http://www.nationalbeeunit.com) or as a hard copy.

Contingency plans are in place to deal with any incursion into the UK and were tested in the field this year in both England and Wales. Early detection is the key to the success of any attempt to eradicate SHB. As well as an increased focus on inspection by the NBU of imports (queens and colonies) and colonies situated in areas considered at increased risk of an incursion, it is essential that all beekeepers remain vigilant. It is also essential that all apiaries be registered on BeeBase (as well as beekeeper contact details) so that we can identify apiaries at risk in the event of an incursion of SHB into the UK and target control measures effectively.

I would like to thank members of the Sentinel Apiary Programme, for their diligence in monitoring their own colonies for exotic pests.

The most serious threat of the introduction of SHB into the UK remains the trade in bees and hive products. Import regulations are our main defence and it is essential that all beekeepers abide by them. If in any doubt, please contact the NBU office or me.

### **National Beehive Count.**

The UK is committed to taking action to improve the state of our pollinators and recently published strategies set out how, by working together, we can ensure a thriving and sustainable pollinator population. One of the first things we need to do is to improve our current understanding of our honey bee population – how many there are and how healthy they are.

We are doing this by launching an annual National Beehive Count from the winter of 2016/17 onwards. The idea is to estimate the number of beehives going into winter dormancy. In order to work out the best way of estimating the number of bee hives (colonies) in the UK, a smaller, pilot count is taking place during the winter of 2015/16. For the pilot, we propose to use the information on beehives numbers held on BeeBase and other sources to derive our estimate of the national count.

This will also support the European Commission in its project to understand the state of beekeeping across the EU and as a mechanism to allocate funds to support the beekeeping sector from 2020 onwards.

We are asking all beekeepers to help by updating existing information about their beehives by 12th February 2016. We would like to record the number of overwintering hives so please update your figures to reflect the number of beehives within your apiaries as of 1st November 2015. Using this date will help us ensure consistency across the country by reflecting the national position at a single point in time. If for any reason you are unable to update your records before this date, your response will still be counted and will feed into autumn's Hive Count.

Please could you update or add any new contact details and apiary records, including how many colonies you own. If you have any other questions not covered by this please don't hesitate to contact the National Bee Unit office:- e-mail: [nbuofficec@apha.gsi.gov.uk](mailto:nbuofficec@apha.gsi.gov.uk)

Telephone: 03003 030094

## **Beebase registration**

There is a common misunderstanding that beekeeper's who are members of a Beekeeping Association are automatically registered on Beebase, unfortunately this is not the case.

Generally you are registered on Beebase, if, you have had your bees inspected by an Appointed Bee Inspector, added to the data base by an Appointed Bee Inspector (without an inspection), by the office staff at the National Bee Unit in York (with prior permission from the you or your Beekeeping Association) or registered on-line yourself.

We are currently trying to encourage as many beekeepers as possible to register on BeeBase. This will enable use to contact beekeepers for example, to undertake exotic pest surveillance work, to offer management advice and inspect their colonies for notifiable disease.

When notifiable disease is found, the Beebase 'sweep system' is used to search the area around the disease outbreak (normally 3km). This enables us to visit the beekeepers in the surrounding areas to make sure that their bees have not contacted the disease.

We then use our email disease alert system to make beekeepers aware that notifiable disease has been found in their area. **To be alerted you must have a correct/current email address on BeeBase.** If you are registered, please make sure that all your colony amounts, apiaries and your personal details are up to date.

If you are not already registered on BeeBase please register as soon as possible.

If you are unsure whether you are registered, or are having difficulty registering, please contact the NBU office on 03003 030094

Please note the National Bee Unit does not pass any of your personal information to third parties.

To access the site, please visit [www.nationalbeeunit.com](http://www.nationalbeeunit.com)

## **Good Husbandry Days 2016**

In 2016, the Northern inspection team will hopefully be organising one or two one-day 'Healthy Bee Days' events throughout the region. If you would like more information on organising and running one of these days please can you contact me on my details at the end of this report.

We will be asking associations to encourage 1<sup>st</sup> and 2<sup>nd</sup> year beekeepers on the course and particularly beekeepers that have not attended this type of training course before. Pre-booking to reserve a place will be required.

These events will be focus on 3 or 4 of the following: -

- 1. *Varroa* control/management**
- 2. Good husbandry/hygiene/barrier management**
- 3. Diseased and 'confusion' comb recognition**
- 4. *Nosema* diagnosis and management.**
- 5. Practical hands on examination of honeybee colonies for disease.**
- 6. Exotic Pest recognition and management**
- 7. Comb changing**

I would like to apologise for the cancellation of the 2015 Good Husbandry Days, this was due to my ill health (see below)

## **My health**

As some of you will know, I have not been well in 2015 and have not worked for most of the 2015 season. I had a heart attack in February 2015 and collapsed and hit my head in August, from this I suffered two brain haemorrhages. I am very slowly starting to feel better, but it has been difficult to come to terms with my illnesses, particularly as I have always been fit and healthy.

## **CONTACTS**

### Seasonal Bee Inspector Contacts

#### **Merseyside/Wirral**

Mr Mark McLoughlin (available April until the end of September)

Works mobile: 07500 891425

E-mail: [mark.mcloughlin@apha.gsi.gov.uk](mailto:mark.mcloughlin@apha.gsi.gov.uk)

Working 3 days per week

#### **Cumbria/North Lancashire**

Please contact Regional Bee Inspector – Ian Molyneux

#### **Lancashire and some parts of Greater Manchester**

Mr John Zamorski (available April until end of September)

Works mobile: 07775 119446

E-mail: [john.zamorski@apha.gsi.gov.uk](mailto:john.zamorski@apha.gsi.gov.uk)

Working 3 days per week

#### **Durham, Tyne and Wear and Northumberland**

Mr Ian Wallace (available April until end of September)

Works mobile: 07775 119445

E-mail: [ian.wallace@apha.gsi.gov.uk](mailto:ian.wallace@apha.gsi.gov.uk)

Working 5 days per week

#### **Cheshire**

Mr Graham Royle (available April until the end of September)

Works mobile: 07500 891423

E-mail: [graham.royle@apha.gsi.gov.uk](mailto:graham.royle@apha.gsi.gov.uk)

Working 3 days per week

Details of disease incidence, research and news updates are regularly placed on the NBU website on [www.nationalbeeunit.com](http://www.nationalbeeunit.com)

#### **Northern Regional Bee Inspector**

Ian Molyneux.

10 Bramhall Ave,

Harwood,

Bolton.

BL2 4EL.

Tel: 01204 381186

Mobile: 07815 872604

E-mail: [ian.molyneux@apha.gsi.gov.uk](mailto:ian.molyneux@apha.gsi.gov.uk)

## **HON EXHIBITIONS OFFICER'S REPORT**

The 2015 Show had 25 members enter, exhibiting 166 exhibits. This meant that we had enough entries to award the BBKA Blue Ribbon.

The date of the show did mean that the winner of the Blue Ribbon was unable to enter the National Honey Show as the deadline had passed.

The Judges were Ivor Flatman and Peter Schollick, who judged the exhibits assisted by stewards; Edward Hill, Margaret Wilson and Rob Magee. The judges gave a very detailed report of the show and for this we thank them.

The Humphries Memorial Lecture was given by Pam Hunter. The talk was very interesting and seemed to be very well received by all. Although the setting of the lecture did mean that at times it was a little hard to hear. The quiz was a great success and Preston B won the Polynuc Prize, which was kindly donated by Maismore Apiaries.

Each entrant who sends a stamped, addressed envelope with the entry gets a copy of the BBKA Show Rules (1994) in the envelope along with the Exhibitor Labels. Members who collect their labels on the day can pick up a copy of the rules at the Show.

As for the awarding of prize cards, there were some classes at which no award was given, reasons being: the mead was entered into the wrong class, or that the schedule stated an invention. The judges felt that the entries into this class did not meet the requirements of an original idea.

Having a whole day event was well received by members and overall the quiz was well received as well. Overall, it was a cheerful, friendly meeting of new members and old hands, all of whom learned something from the Show. It was very good to see new beekeepers winnings awards this year as well. Congratulations. However, at the end of the show it was discovered that 3 jars of honey had been taken. All of these had been taken from the same person and they have been refunded for their loss. Please can we be vigilant about collecting our own jars of honey and if you are unsure of your exhibitor numbers please do ask the show secretary.

I would like to thank Maismore Apiaries for donating the Polynuc, Thornes Beekeeping Supplies for their generous £45 gift vouchers, Bee Good Gifts for their hamper, Sherriff Beekeeping Supplies for their generous gift basket and to Mann Lake for their donation of a hive tool and hat. Thank you also to everybody else who donated gifts for the raffle. £60 of the money raised from the raffle has been donated to Bees Abroad to help provide sustainable beekeeping for rural areas abroad.

I would also like to thank, Barbara Farbon, Jilly Smith and Martin Smith for assisting set up the hall. Edward Hill, Margaret Wilson and Rob Magee for Stewarding. Sheila Myron for tea and coffee making as well as writing prize cards. Thank you to Martin Smith for making sure the quiz ran smoothly and for Eddie Farrell and Jilly Smith for selling raffle tickets. Thank you to the Nabs Head Pub for providing our lunches. Lastly, thank you to the members for entering and making it a successful show. See you next year!

Hazel Smith



## LANCASHIRE COUNTY HONEY SHOW RESULTS OCTOBER 2015

Class 1: 2 jars of light honey	1 <sup>st</sup> Ray Dowson 2 <sup>nd</sup> Rob Magee 3 <sup>rd</sup> Martin Smith VHC John Hewitt
Class 2: 2 jars of medium honey	1 <sup>st</sup> Paul Butler 2 <sup>nd</sup> Rob Magee 3 <sup>rd</sup> Ray Dowson HC R&S Myron
Class 3: 2 jars of dark honey	1 <sup>st</sup> R&S Myron 2 <sup>nd</sup> Ray Dowson 3 <sup>rd</sup> Chris Carey
Class 4: 2 jars of Ling Heather honey (not Bell Heather)	HC Dave Harrison
Class 5: 2 jars of naturally crystallised honey	2 <sup>nd</sup> Brian Jones VHC Dave Harrison
Class 6: 2 jars of soft set honey (creamed)	2 <sup>nd</sup> Paul Butler
Class 7: 2 jars of honey gathered in 2015	1 <sup>st</sup> Robert Magee 2 <sup>nd</sup> Paul Butler 3 <sup>rd</sup> Martin Smith VHC Brian Jones
Class 8: Novice class – 2 jars	1 <sup>st</sup> Eddie Farrell 2 <sup>nd</sup> Rosemary McLean 3 <sup>rd</sup> Kath Cordingley HC Paul Noblet
Class 9: Beginners class – 1 jar	No Entries
Class 10: Junior class – 1 jar	No Entries
Class 11: Gift class – 1 jar	1 <sup>st</sup> John Ainsworth 2 <sup>nd</sup> Eddie Farrell 3 <sup>rd</sup> Dave Harrison VHC Martin Smith
Class 12: Composite class – 3 jars of different classes of honey	1 <sup>st</sup> Rob Magee 2 <sup>nd</sup> R&S Myron 3 <sup>rd</sup> Kath Cordingley
Class 13: Comb of honey for extraction	1 <sup>st</sup> Eddie Farrell 2 <sup>nd</sup> Rob Magee 3 <sup>rd</sup> John Ainsworth

Class 14: Two containers of cut comb honey	1 <sup>st</sup> Rob Magee 3 <sup>rd</sup> Kath Cordingley
Class 15: One cake of beeswax – 226g	1 <sup>st</sup> Robert Magee 2 <sup>nd</sup> Hazel Smith 3 <sup>rd</sup> Ray Dowson
Class 16: 6 cakes of beeswax – 28g each	1 <sup>st</sup> Rob Magee 2 <sup>nd</sup> Chris Cordingley 3 <sup>rd</sup> Viki Cuthbertson HC Hazel Smith
Class 17: 1 beeswax candle – displayed erect (may be lit)	1 <sup>st</sup> Ian McLean 2 <sup>nd</sup> John Mooney 3 <sup>rd</sup> Rob Magee
Class 18: 1 beeswax candle – decorative	1 <sup>st</sup> Rob Magee 2 <sup>nd</sup> Viki Cuthbertson HC Wendy Noblet
Class 19: 1 bottle of mead – dry	No Award
Class 20: 1 bottle of mead – sweet	1 <sup>st</sup> Mark Oakley 2 <sup>nd</sup> Rob Magee 3 <sup>rd</sup> Margaret Wilson
Class 21: 1 bottle of homemade wine	1 <sup>st</sup> Mark Oakley 2 <sup>nd</sup> Dave Harrison 3 <sup>rd</sup> Margaret Wilson
Class 22: 1 plain honey cake (not to exceed 200mm diameter)	1 <sup>st</sup> R&S Myron 2 <sup>nd</sup> John Mooney 3 <sup>rd</sup> Martin Smith HC Paul Butler
Class 23: 1 decorative honey cake	1 <sup>st</sup> Penny Oakley 2 <sup>nd</sup> Paul Butler 3 <sup>rd</sup> Val Bradley
Class 24: 6 small honey cupcakes – may be decorated	1 <sup>st</sup> Rosemary McLean 2 <sup>nd</sup> Penny Oakley 3 <sup>rd</sup> Hazel Smith

Class 25: 1 honey fruit cake – any recipe

1<sup>st</sup> R&S Myron  
2<sup>nd</sup> Val Bradley  
3<sup>rd</sup> Martin Smith

Class 26: 1 photographic print, not to exceed A4

1<sup>st</sup> Wendy Noblet  
2<sup>nd</sup> Martin Smith  
3<sup>rd</sup> Rob Magee

Class 27: Homemade practical invention

No Award

Class 28: A beekeeping poster

3<sup>rd</sup> Val Bradley

Class 29: An item of craft relating to bees or beekeeping

1<sup>st</sup> Val Bradley  
2<sup>nd</sup> Hazel Smith

Class 30: A bee themed picture

1<sup>st</sup> Hazel Smith  
2<sup>nd</sup> Val Bradley

BBKA Blue Ribbon: Penny Oakley – 1 decorative honey cake

Lord Stanley President's Challenge Cup (Best exhibit of honey in show) – John Ainsworth – gift class

Sir Wroth Lethbridge President's Cup (highest number of points in show) – Rob Magee

E McCormick President's Branch Shield (branch with the highest number of points) – Ormskirk and Croston.

## **SOUTHPORT FLOWER SHOW 2015**

Southport Flower Show is a major event for the beekeepers of the North West. The large Honey & Bees Marquee is now a very important part of the show and is an opportunity for beekeepers to engage with the public and to explain the importance of the honeybees to mankind and also to encourage people to find out more. Several branches provide the stewards who are on duty in the Honey Marquee throughout the four days of the show. Approximately 70,000 people visit the show and most of them pass through the marquee.

The support the Honey Marquee receives from the Flower Show is exceptional and a major part of the success of our marquee. There are plans this year to add another section to the marquee, not connected with honey, with classes for baking and preserves.

In the week preceding the show there is always a lot to do to make the marquee ready. We have strong teams of volunteers from Southport and Ormskirk branches who work for several days pre show to set up the tables, put on the covering and set out the classes ready for the exhibits to start arriving on the Tuesday evening. This is particularly helpful for those who cannot make the 5.50pm deadline on the Wednesday evening. The marquee is now ready and looks great. Tuesday evening and some people stage their exhibits. Wednesday sees a steady throng of people staging their exhibits, some polishing finger marks off jars, some arranging displays, some arranging flowers, affixing class labels, all very busy until the deadline of 5.50pm. By then the judges have arrived and made themselves known to the Honey Manager and then disappeared whilst staging is taking place. As 2015 such a bad year for the bees we expected entries to be down on 2014 but we did still have in the region of 200 entries overall. Four judges and four judges' stewards worked until about 9.00pm. We had two judges from Yorkshire, new to Southport this year and they commented on the high quality of the entries and again the high standard of our show; Southport continues to grow while other shows are in decline.

The marquee was very busy throughout the four days. Great interest in the candle making and the skep making; there is always a crowd around the virtual hive when it was being explained. The simple children's table was popular. Our unique hive opening attracts a crowd whenever the weather permits the hive to be opened. Stewarding was excellent, with many visitors commenting on the friendly atmosphere in our marquee and the helpfulness of the stewards. The after show party for exhibitors is now a permanent fixture of the show and it was all hands on deck to clear everything away before we sat down to a veritable feast!

New in 2015 was the building of the dry stone wall near to the main entrance which is to be a permanent feature of the Showground. A team of apprentices worked throughout the show and always had a crowd around them. The centre of the wall with the bee bole was finished and the wall will be completed at the show this year. There was usually a beekeeper there with a skep to explain the purpose of the wall. A great addition to our beekeeping displays! The team joined us at the after show party and said what a wonderful four days they had experienced.

Altogether a wonderful show AGAIN!!

Barbara Roderick

## TREASURERS REPORT 2015

This year membership has increased and this has helped the budgets of all the branches. Most of our branches have made efforts to reduce the amount spent on postage and this has been facilitated by the increasing number of beekeepers who also use the internet as a matter of course. Branches also benefited from two years Gift Aid repayment which helped their balances considerably! The process of applying for the Gift Aid repayment was made easier by being able to access the BDI data base. I am pleased that such a good working relationship now exists with the branch treasurers, it certainly makes my task much easier and no doubt theirs.

The biggest areas of expenditure for all continue to be education, equipment and associated events. These are very necessary expenditures as we aim to educate our members and encourage excellence in beekeeping. All six branches made small profits

At the last 2015 AGM it was noted that BBKA subs will increase yet again from November 1st 2015. It was therefore agreed that branches will be charged by county as follows:

Registered members £21  
Junior and County £10.50  
Partner members £15

also with effect from 1st November 2015.

This seems to be an annual pattern, so we can anticipate that county charges will inevitably increase again in November 2016.

Your county contribution provides the excellent Spring Convention which is always a great success and also the Honey Show which is usually very well supported. Sadly this year attendance at both events was fewer than in previous years. Moves are afoot to try to encourage greater participation at these events. At both of these events the speakers enrich our educational experience.

Barbara Farbon  
Treasurer

**Lancashire & North West Beekeepers Association**  
**Consolidated Income & Expenditure 2015**

2014	Income	2015	2014	Expenditure	2015
£14,559.05	Subscriptions	£17204.60	£46.80	Postages	£13.68
£851.24	Donations	£1082.33	£0.00	Printing & Stationery	£150.85
£0.00	Adverts	£20.00	£10,399.10	B.B.K.A Capitation	£11,406.00
£33.56	Interest	£34.47	£53.00	Insurance	£142.50
£625.70	Honey Shows	£1482.56	£1,236.39	Honey Shows	£2,044.00
£590.80	B.D.I. Extra Hives	£1059.50	£1,807.25	B.D.I.	£1,938.05
£6,432.79	Education	£8054.00	£1,973.34	Education	£1,224.65
£1,157.37	Equipment	£778.06	£4,451.80	Equipment	£2,911.40
£1,316.93	Convention	£1588.00	£1,163.00	Convention	£1,387.00
£1,114.10	Socials & Raffles	£1310.52	£1,073.38	Socials Functions	£1,092.52
£0.00	Tax Refunds	£5599.50	£269.00	Rooms	£712.25
£1,419.00	Treatments	£658.00	£3,242.69	Lecturers	£1,844.61
£591.16	Newsletters/Magazines	£494.62	£1,710.12	Treatments	£0.00
£235.75	Sundry Income	£486.82	£452.54	Newsletters/magazines	£455.77
£0.00	Grants	£0.00	£180.00	Honoraria	£180.00
£2,069.89	Fundraising	£834.00	£25.00	Cup Engrav. & Repairs	£24.00
			£0.00	Handbook	£0.00
			£86.99	Subs & Donations	£35.00
			£1,083.97	Sundries	£875.16
			£177.18	Books	£0.00
				Admin	£130.90
			£4,932.81	Apiary	£4,170.41
<b>£30,997.34</b>	<b>Total Income</b>	<b>£40686.98</b>	<b>£34,363.96</b>	<b>Total Expenditure</b>	<b>£30,738.75</b>
	<b>Unpresented tax cheques</b>	<b>£906.25 *</b>			
	<b>Adjusted for non presentation</b>	<b>£39779.73 *</b>			
<b>£366.40</b>	Opening Cash Balance	<b>£958.42</b>	<b>£958.42</b>	Closing Cash Balance	<b>£468.11</b>
<b>£39,101.03</b>	Opening Bank Balance	<b>£35141.99</b>	<b>£35,141.99</b>	Closing Bank Balance	<b>£44,735.77</b>
				<b>Unpresented cheques</b>	<b>£62.49 **</b>
				<b>Adjusted</b>	<b>£44,673.28 **</b>
<b>£70,464.77</b>		<b>£75,880.14</b>	<b>£70,464.77</b>		<b>£75,880.14</b>

**Notes to Consolidated Accounts**

- 1 The Consolidated Accounts of the Association have been prepared from the Accounts submitted by the Branches and the Central Council Accounts for the Year Ended 31st October 2015

B Farbon Hon. Treasurer  
15 February 2016

R Dowson Independent Examiner  
15 February 2016

**Lancashire & North West Beekeepers Association**  
**Accounts for the year ending 31<sup>st</sup> October 2015**  
**Central Council Income and Expenditure**

2014	Income	2015	2014	Expenditure	2015
£11,784.00	Capitation from Branches	£12,614.00	£6.80	Postages	£13.68
£27.04	Bank Interest	£27.58	£0.00	Printing & Stationery	£20.50
£20.00	Donations	£0.00	£0.00	Handbook	£0.00
£1,316.93	Conventions	£1,588.00	£0.00	Room Hire	£0.00
£0.00	Advertising Revenue	£20.00	£53.00	Insurance	£53.00
£64.12	Members Honey Show	£435.60	£10,399.10	BBKA Capitation	£11,406.00
£0.00	Tax Refunds from HMRC (13/14)	£2,743.18	£77.00	Subs/Donations	£35.00
£0.00	Tax Refunds from HMRC (14/15)	£2,856.32	£410.72	Members Honey Show	£889.83
£0.00	Education		£1,163.00	Conventions	£1,387.00
£25.03	Sundry		£28.35	Education	£75.00
£0.00	L Ross savings Account		£180.00	Honoraria	£180.00
			£0.00	Branch Tax Refunds from HMRC (13/14)	£2,729.00
			£0.00	Branch Tax Refunds from HMRC (14/15)	£2,855.75
			£114.40	Sundry	£22.25
			£0.00	Admin (Bank Charges)	£4.00
<b>£13,237.12</b>	<b>Total Income</b>	<b>£20,284.68</b>	<b>£12,432.37</b>	<b>Total Expenditure</b>	<b>£19,671.01</b>
£0.00	Opening Cash Balance	£0.00	£0.00	Closing Cash Balance	£0.00
£3,286.37	Opening Bank balance	£4,040.87	£4,040.87	Closing Bank balance	£4,629.13
£3,090.99	Opening savings Account (-LR)	£3,203.43	£3,141.24	Branch savings Account (-LR)	£3,228.84
				Unreconciled cheque (DH)	£20.00
<b>£19,614.48</b>		<b>£27,528.98</b>	<b>£19,614.48</b>		<b>£27,528.98</b>

**L Ross Account**

2014 Reported	£2014 Amended		2015
£246.12	£246.12	National Savings and Investment Account	£183.93
£0.00	£0.00	Interest	£0.00
£0.00	£62.19 -	Medal and Engraving	£0.00
<b>£246.12</b>	<b>£183.93</b>		<b>£183.93</b>

## **LANCASHIRE MEMBERSHIP SECRETARY'S REPORT for 2015**

This is my second Annual Report.

The prime task of the Association Membership Secretary is to submit to the BBKA amendments to the Register of Members received from the Branches.

Those amendments include details of new members in the membership classes BBKA Honorary, Registered, Partner, Country, and Junior; changes of membership class and personal information; former members who were lapsed but have now paid their subscriptions for the current membership year; transfers between Branches; lapsed members who have not paid for the current year; and deceased members.

Amendments can be notified by the Membership Secretary to the BBKA at any time throughout the year and the register is updated on an ongoing basis.

A good working relationship has been established between the Membership Secretary and the BBKA Membership Department.

The register is used to provide invoices to Association Treasurers in respect of capitation payments. This therefore requires the register to be kept up to date.

Details of new members should be submitted by the six Branches of the Association as soon as a member's subscription is received. Details of lapsed members who have not paid their current year's subscription and any changes in membership classes also should be reported promptly to the Membership Secretary. This will help to keep the membership register up to date and assist the accuracy of capitation invoices received from BBKA.

The Branches were requested by the Membership Secretary to check the accuracy of their respective Branch membership numbers and details, as shown in the Register of Members, in preparation for the April 2015 and September 2015 capitation process, following which any amendments identified by the Branches were reported back to BBKA. This verification procedure will continue to be undertaken in future years.

The April 2015 capitation (as at 14<sup>th</sup> April 2015) showed a total Lancs & North West BKA membership of 586. Total membership, as shown in the secondary capitation as at 1<sup>st</sup> September 2015, rose to 754, an overall increase of 168 members.

Total membership as at the end of December 2015 increased further to 767, on the basis of membership changes reported by the Branches up to that date.

I wish to thank the Association and Branch Treasurers and Secretaries for their support throughout 2015 and for continuing to inform me of any amendments to their respective Branch membership details as they occur.

Anthony Lee  
Membership Secretary  
Lancs & North West BKA



## BBKA EXAMINATION CERTIFICATES

C1	Junior
C2	Basic
C3	Intermediate Husbandry
C4	Intermediate Theory
C5	Advanced Theory
C6	Advanced Husbandry
MB	Master Beekeeper
J	Senior Judge/Show Judge Certificate
M	Microscopy
NDB	National Diploma in Beekeeping

## EXAMINATIONS SECRETARY'S REPORT 2015

Beekeeper education continues to be a high priority for the Lancashire BKA, by way of talks at branch meetings, by apiary demonstrations, by small-group ( 'Course in a Case' ) learning and by accredited examinations.

I became Lancashire examinations secretary in April 2015, as the local 'point of contact' for all BBKA examinations, to guide members on correct procedures for assessment and to set-up and invigilate the written ( module ) exams.

If you have any exam questions please ask.

**Junior Assessment.** There have been no candidates this past year

### **Module Examinations Successes Spring 2015**

Exam	Blackpool	East Lancs	Ormskirk	Preston	Total
Mod 1	2 P			2 C	4
Mod 3		1 P			1
Mod 5			1 P 1 C	1 P	3
Mod 6	2 P				2
Mod 7		1 P 2 C		1 C	5
Mod 8				1 P	1
Total	4	5	2	5	16

### **Basic Examinations Successes Summer 2015**

	Blackpool	East Lancs	Liverpool	Ormskirk	Preston	Total
Pass	1	2	1	1	3	8
Credit	0	3	1	6	2	12
Total	1	5	2	7	5	20

The Leonard Ross trophy for the best Basic marks went to John Ainsworth (Preston)

**Module Examinations Successes Autumn 2015**

Exam	East Lancs.	Preston	Total
Mod 1		1 P	1
Mod 3		1 P 1 C	2
Mod 8	2 P	1 P	3
Total	2	4	6

**General Husbandry Successes Summer 2015**

John Hewitt ( Ormskirk Branch ) and Janet Murray ( East Lancs. Branch )

Barbara Roderick, Sue Webster and Margaret Wilson gave valued help with exams.

Brian Forster

## **BRANCH REPORTS**

### **EAST LANCASHIRE BRANCH**

#### **EAST LANCASHIRE OFFICERS 2015**

Chair	Janet Murray
Vice Chair	John Zamorski
Hon Sec	Vici Winstanley
Hon Treas	Russel Piercy
Ed Officer	Janet Murray
Membership Sec	Juli Scott
Apiary coordinator	Vici Winstanley
Apiary Manager	Jane Ingham
Website co-ordinator	Barrie Scott
Honey Show Sec	VACANT
	Alistair McLean
	John Cookson
	Karl Francis
	Damian Appleby

#### **DELEGATES TO THE CENTRAL COUNCIL**

Hon Chairman	Janet Murray
Hon Treas	Russell Piercy

#### **Chairman's Report 2015**

2015 has been another busy and successful year for the branch, starting with the transfer, very early in the season, of our club apiary from Salmesbury to the Offshoots Project at Townley Hall in Burnley. Our bees are in a good location and have developed into strong, healthy colonies providing excellent opportunities, for both new members and those more experienced, to learn and acquire new beekeeping skills. In addition we were also able to provide nucs to beginners from these stocks and even produced a little honey! This year our aim was to get the bees established, providing clean equipment and hives, and open our apiary as a teaching apiary for both beginners and more experienced alike. This we have done and next year we intend to develop this to extend the scope of subjects taught for instance queen rearing, pre-emptive swarm control and so on.

John Zamorski ran a two day course in microscopy in January which was well attended, grateful thanks to John for this we hope he will repeat it soon.

Our monthly meetings have been well supported through the year, with the usual seasonal lows and highs. Most of these have been held at Offshoots where we have access to the Education Room and the facilities there. Thanks to the Offshoots team for this. The advantage has been that it's close to our apiary for openings which we have tried to do at most of these meetings.

We have also held meetings in different locations, for instance the Honey Show, held in October was at Hansons Cement, Clitheroe and had an excellent turn out with a good number of entries.

In addition Graham Royle NDB arrived at our September meeting in Blackburn to give us a talk about the mistakes he'd made as a beekeeper, which made us all feel a lot better!

The education department has as usual been extremely busy running courses and organising assessments and exams, throughout the year.

These have included, Introduction to Beekeeping, Preparation for the Basic Assessment, Modules 1,7, and 8. Our pass rate has been very successful and new members have been recruited from the Introductory courses and Basic candidates moving on to study Modules upon their success in the assessments.

In addition, we have been pleased to welcome people who are members of different branches, to join East Lancs to study with us on our courses.

## **PROGRAMME OF MEETINGS FOR 2016:**

To view the full programme of meetings for the year please visit:

[www.eastlancsbees.org.uk/whats-on/](http://www.eastlancsbees.org.uk/whats-on/)

## BLACKPOOL AND FYLDE BRANCH

### BLACKPOOL AND FYLDE OFFICERS 2015

President	Ms D Richardson
Chairman	Mr C Greenhill
Vice Chair	Mr D Kindred
Treasurer	Ms J Preece
Asst.Trs	Mr E Hassall
Secretary	Ms P Goldstone
Asst.Sec.	Ms A Hulme
Librarian	Ms K Kindred
Education officer	Ms K Kindred
Quartermaster	Mr E Hasall
Cent.Coun.Rep	Mr M Gardener
Asst Coun Rep	Mr E Hassall:

### CHAIRMAN'S REPORT FOR 2015

Once again the Chairman's report consists of a great number of thank yous.

Firstly to all those who helped with the development of the Out Apiary at Lytham Hall and to those who take a lead on Sunday mornings.

Rose Ferguson, Pamela and Paulette for their work clearing weeds from the garden areas.

David Walters for the construction of some wonderful hive stands.

Janet for her very successful Introduction to Bee Keeping days in May and June which has introduced new members into the club.

Kath for her very popular teaching sessions on a Monday afternoon. Congratulations on helping a number of members pass their Basic Bee keeping exam, and module 6. and a special congratulations on her passing her General Husbandry. A great achievement..

Both Kath and Janet's session has raised additional funds which are needed to progress the Out Apiary.

Keith Hemming for allowing us to use his hives in our training sessions and for giving us the benefit of his wealth of experience.

Pamela and Paulette for their continued support in helping sorting things out and making sure we are doing what needs to be done every week.

We have had an interesting first year and it bodes well for next year when we plan to have a 6 week course for

beginners taking them through the basic syllabus to credit level which we would like to start in February or March.

Keith Hemming is keen to do Queen rearing which again needs preparation to start early in the season.

We have 6 colonies belonging to the club and expect to expand further which will need the purchase of more equipment. We now have 6 National hives 2 Poly Nuc boxes, a selection of Bee suits, Electric Wax extractor along with other basic equipment. Money is very tight, we have sold all the Ambrosia but to purchase more for next year we will need to budget about £900 and will need money to purchase more National Hives if we expand our colonies. We would like to construct a large lean to and would love to be able to obtain grant funding. Any help or suggestions for this would be appreciated. Our initial application for HLF was turned down.

I think we have done very well to get where we are without outside financial assistance.

Many thanks to Paulette for arranging an interesting range of speakers and demonstrations. Attendance has been good as the meetings have been stimulating and pertinent. Many thanks for the committee for their continued support and to the membership for attending. Your contributions to the raffle and purchase of tickets has helped with fund raising. So any unwanted Christmas presents will be gratefully accepted for future raffles.

The Garstang and Great Eccleston shows were well attended both by Blackpool Bee Keepers offering to help man the events and also by members of the public. The observation hive and discussion about bee keeping is of great interest to members of the public and we were all kept busy talking and demonstrating.

I see the events in two ways, those members supporting the club demonstrations and those entering members exhibiting their honey products into the show. A few weeks ago, I attended the Ormskirk Bee Keepers branch and it was interesting to see new year bee keepers walking away with first prizes. Next year we need to be more organised, by keeping our honey and honey products ready now to enter into the shows, in joining together in getting our honey entered into the show and delivering and collecting it after showing.

We are still waiting for Lytham Hall to produce the "Agreement to Occupy" document for us to agree and sign and until this is done it is delaying any new signage, and the Bill Poole gate notice.

We extracted 20lbs of Lytham Hall Honey and have designed a label to sell it in 12oz, 340gr. Jars at Lytham Hall. However until the "Agreement to Occupy" has been signed we are delaying in offering it for sale.

Lytham Hall is very supportive of having Blackpool and Fylde Bee Keepers at Lytham Hall and would like us to promote the club and Bee Keeping at events in 2016 but no plans have yet been made how to do this.

Charlie Greenhill  
Chairman.

## 2016 Branch Meetings & Activities      Dates - Venues - Topics

Date	Venue	Speaker
Tuesday 15th March 7:15pm	Methodist Hall  Queensway Poulton-le-Fylde FY6 7ST	Keith Hemming on swarm control Including one you may not have seen before
Tuesday April 19th 7:15pm	Methodist Hall  Queensway Poulton-le-Fylde FY6 7ST	Speaker to be arranged
Sunday 15th May 2:00pm	Out Apiary Lytham Hall	Speaker to be arranged
Sunday 19st June 2:00pm	Out Apiary Lytham Hall	Speaker to be arranged
Saturday & Sunday July 16th & 17th	Members Branch Stand Great Eccleston Show	Members Help appreciated at the stand. <b>Enter your honey and wax products</b>
Saturday August 6th	Garstang Show	Members Help wanted on the stand. <b>Enter your honey and wax products</b>
Sunday 14th August 2.00 pm	Out Apiary Meeting At Lytham Hall	Speaker to be arranged
Tuesday 20th September 7:15pm	Methodist Hall  Queensway Poulton-le-Fylde FY6 7ST	Speaker to be arranged
Tuesday 18th October 7:15pm	Methodist Hall  Queensway Poulton-le-Fylde FY6 7ST	Speaker to be arranged
Tuesday 15th November 7:15pm	Methodist Hall  Queensway Poulton-le-Fylde FY6 7ST	AGM & Jacobs Join

## **LIVERPOOL & DISTRICT BRANCH**

### **LIVERPOOL OFFICERS 2015**

Chair:	Mr Peter Wass
Vice Chair	Mr Doug Jones
Secretary:	Mrs Tracey Seddon
Treasurer:	Mr John McCann
Membership Secretary	Mr John Heath
Librarian:	Mr John Mooney
Honey Show Sec:	Mr Rob Myron
Education Officer:	Mr Cliff Porter
Web Master:	Mr Simon Kember Mr Cliff Porter
Apiary Managers	Mr Dave Harrison Mr Eric Graham Mr Alexander Hill

### **Committee:**

Mr A Gillett, Mr E Graham, Mr A Hill, Mr D Harrison, Mr J Heath, Mr P Hitchiner, Mr D Jones, Mr S Kember, Mrs K Libecans, Mr J McCann, Mr J Mooney, Mr R Myron, Mrs S Myron, Mr C Porter, Ms T Seddon, Mr A Stephenson, Mr D Thornton, Mr P Wass

### **Central Council Delegates:**

Mrs S Myron

Mr Andrew Stephenson

Stand in: Mr Rob Myron

### **SECRETARY'S REPORT FOR 2015**

With a relatively benign and quiet winter of 2014/15 in comparison to the previous year, we saw some cold and unsettled weather in January and late February, giving way to a cooler summer with plenty of dry and settled weather but not especially warm temperatures. The late spring confined bees to their hives at a crucial time for honey production and as a result, honey yields have been far below expected levels. In addition many of our members have reported losses of bees over the winter months.

We have had a mixed year on talks and meetings, with Doug Jones starting the year with a fascinating talk on Beekeeping in Uganda. The beginners courses have continued to thrive with 17



attendees this year. The Annual Dinner at the new Everyman Bistro was again a success and enjoyable evening.

On talks and meetings, John McCann and Peter Wass covered the Beekeeping Year, Dave Harrison on Taking bees to the Heather and Arthur Gillett and Doug Jones on Preparing for the Honey Show with an interesting Microscopy session at Rice Lane City Farm were all part of the annual programme of events.. Unfortunately, the Queen rearing and the Frames and Foundation sessions were cancelled due to bad weather and our external speaker being held up in accident traffic on the M56.

However, again John Zamorski gave a fantastic talk at on Hive Management and Bee Disease hosted by Evelyn and her husband in their garden. The weather held out for the day and was enjoyed by all. It was reported that the joint meetings with Wirral have been well attended by Liverpool members.

It is hoped that more experienced members will be still willing to give more help to the newer and less experienced beekeepers again next year. Looks like another interesting year ahead.

Karyn Libecans (November 2015)

### **LIVERPOOL BRANCH MEETINGS 2016**

Sat 9 <sup>th</sup> Jan, 2.30pm	Making and using Skeps, Peter Wass, St Anne's Millenium Centre, View Rd, Rainhill, Prescot L35 0LE
Sat 23 <sup>rd</sup> Jan	Beginners Course Day 1, John McCann, Peter Wass, Sheila Myron, John Heath, Croxteth Hall, Liverpool
Sat 30 <sup>th</sup> Jan	Beginners Course Day 2, details as above
Fri 12 <sup>th</sup> Feb, 7.30pm	Annual Branch dinner, Blackburne House, Blackburne Place, Liverpool L8 7PE
Fri 19 <sup>th</sup> Feb, 7.30pm	Beekeeping with the Zest Hive by guest speaker Bill Summers. Plus a brief presentation on research on honeybee forage and health by guest speaker Latha Vellaniparambil. <i>Joint meeting with Wirral Beekeepers, Thornton Hough Village Hall, Wirral, CH63 1JB</i>
Mon 21 <sup>st</sup> Mar, 7.30pm	Colony Decision-making by guest speaker Graham Royle. Plus a brief presentation on research on honeybee forage and health by guest speaker Latha Vellaniparambil. St Helens Bowling Club, Regents Rd, Saint Helens, Merseyside WA10 3HU
Sat 16 <sup>th</sup> Apr, 2.30pm	Making and using a solar wax extractor and/or a warming cabinet by John McCann and John Heath, St Anne's Millenium Centre, Rainhill
Sat 7 <sup>th</sup> May, 2.30pm	Open hive: Summer management/Swarming by guest speaker John Zamorski, at member's apiary, Fulwood Park, Liverpool.

Sat 11 <sup>th</sup> Jun, 2.30pm	Open hives: Shook swarms by guest speaker Ian Molyneux, at Branch Apiary, Woolton Manor.
Sat 9 <sup>th</sup> Jul, 2.30pm	Open hives: Colony health and disease recognition, Cliff Porter and Eric Graham, Rice Lane Farm, Rawcliffe Rd, Liverpool, Merseyside L9 1AW
Sat 13 <sup>th</sup> Aug, 2.30pm	Improving your Handling/End of Season work, by guest speaker Ian McLean, venue tbc
Aug, date tbc 6.30pm	Branch barbecue, Branch apiary, Woolton Manor
Sat 24 <sup>th</sup> Sep	Arnia Remote Hive monitoring – tbc; venue tbc
Sat 8 <sup>th</sup> Oct, 2.30pm	Preparing wax and honey for the show, John McCann/Arthur Gillett, Tarbock Village Hall, Netherley Rd, Prescot, L35 1QG
Sat 5 <sup>th</sup> Nov, 1.00pm	Liverpool and Merseyside Branch Honey Show and AGM, St Anne's Millenium Centre, Rainhill

Monthly branch apiary sessions will also be arranged to involve hive openings and general apiary maintenance, run by Mr D Harrison, mainly aimed at new beekeepers but open to all members.

## **ORMSKIRK & CROSTON BRANCH**

### **ORMSKIRK AND CROSTON OFFICERS 2015**

Chairman	Mr R Dowson
Vice Chair	Mrs M Murdin
Education Coordinator	Mr P Roberts
Secretary	Dr P Oakley
Treasurer	Mrs M Wilson
Branch Auditor	Ms Mary Lonsdale

Committee                    Eddie Farrell, Mark Oakley, Martin Smith, Susan Webster,

### **BRANCH REPORT YEAR ENDED 31ST OCTOBER 2015**

#### **Recruitment and Membership**

Membership for the branch is approximately 210 for the past year. We have again seen a continued interest in beekeeping with enquiries throughout the year.

#### **Schedule of meetings**

Winter meetings were again held at Fiveways in Ormskirk and the majority were well attended. On Monday 19 January Graham Royle's talk was titled 'The Hive Mind...how bees make decisions' and it provided some very interesting insights. On 16 February Bob Smith invited us to 'Tiptoe through the tulips ... botany for beekeepers' and his talk included some colourful slides. On 16 March John Zamorski gave a very informative talk on his 'Experiences of being a Bee Inspector'.

We returned to the out apiary on Saturday 25 April for a meeting which focused on Healthy Bees Day. This was followed by a meeting on 16 May to look at swarm control and making increase and our next meeting on 8 June focused on queen rearing. Branch members were given a useful demonstration on honey extraction on 5 July which provided some helpful information for those new to this task while the meeting on 1 August was all about winter preparation. The high point of the season was again the branch Honey Show on 5 September which attracted a record number of entries and was attended by the highly acclaimed speakers Celia Davies and Bob Smith and judged by Bernard Diaper and Michael Badger.

Another high point in the season was that the branch won the shield for the most points at the Lancashire Honey Show on 10 October.

#### **Beekeeping course and practicals**

This year the branch held a training course in April at Ormskirk School which was attended by 29 people. The day was followed by a series of practical sessions at the out apiary. Martin Smith was again the course tutor, assisted by Ray Dowson. Practical sessions were run by members of the committee and other branch members. As in the previous year, all new members were assigned a mentor and all those who wanted bees received colonies by mid-summer supplied by branch and committee members.

## Examinations

Twenty members undertook the basic assessment and 19 passed this year. A number of members also continued their studies and took a range of modules. Seven people passed the Basic assessment. Margaret Murdin was awarded the NDB and John Hewitt achieved his General Husbandry.

## Events

The Lancashire and NW BKA Spring Convention was held on 7 March at Bishop Temple School. Once again, some members of the branch enjoyed a trip to the BBKA Spring Convention at Harper Adams, held from 17 – 19 April 2015.

Branch members have attended 18 local shows and events and at some schools. Branch and committee members continue to give talks on bees and beekeeping in schools, garden centres and for voluntary organisations. We continue to encourage more people to take part, particularly those new to beekeeping.

The Branch's sixth Honey show was held at Fir Tree Farm on 5 September. The judge, Bernard Diaper, was again very complimentary about the exhibits. The number of entries had increased from last year with 197 exhibits entered by members. It was considered that having Bernard as a show judge gave great credibility to the results. He has kept bees since 1961, holds the Senior National Honey Judges Certificate and has served on the National Honey Show Executive for over 20 years. The award for highest achievement went to Martin Smith with 27 points closely followed by Mark Oakley and Kevin O'Donnell who both had 17 points. Hazel Smith won the Blue Ribbon for the Best in Show.

The Lancashire show was held on 10 October at Samlesbury War Memorial Hall and there were again a number of entries from the Ormskirk and Croston branch with some of our members achieving well-deserved prizes in a variety of classes.

The branch web site continues to be a useful resource for members and interested parties. Information about our programme of events and contact details can be found at [www.ormskirkbeekeepers.co.uk](http://www.ormskirkbeekeepers.co.uk) We welcome contributions for the newsletter from all branch members and hope that we can continue to provide meetings and events that people will support.

**Penny Oakley**

**Branch Secretary November 2015**

## **ORMSKIRK BRANCH MEETINGS 2016**

Monday 11<sup>th</sup> January at 7:30pm - Church House, Church Street, Ormskirk L39 3RD  
Bob Spencer from Bees for Development

Monday 15<sup>th</sup> February at 7:30pm - Church House, Church Street, Ormskirk L39 3RD  
Ian McLean How to photograph insects

Monday 14<sup>th</sup> March at 7:30pm - Church House, Church Street, Ormskirk L39 3RD  
David Rayner talking about the Black Bee project

Saturday 23<sup>rd</sup> April at 2pm - Out Apiary Fir Tree Farm King's Moss WA11 8RG  
Queen Rearing Theory Talk

Saturday 30<sup>th</sup> April at 10am - Out Apiary Fir Tree Farm King's Moss WA11 8RG  
[Healthy Bee Day](#)

Saturday 14<sup>th</sup> May at 2pm - Out Apiary Fir Tree Farm King's Moss WA11 8RG  
Swarm Control

Saturday 4<sup>th</sup> June at 2pm - Out Apiary Fir Tree Farm King's Moss WA11 8RG  
Making Increase

## **Ormskirk & Croston Honey Show**

**24<sup>th</sup> September 2016**

**Fir Tree Farm, Kings Moss**

Just a reminder of the date so that you do not book holidays and miss the show.

We have managed to get two very good speakers, Ben Harden will be travelling from Ireland to be with us and if you are keen on rearing queens, you may even have his book on your book shelf. I have heard him speak at Gormanston and the room was certainly packed to hear him. He makes queen rearing inexpensive and very easy. Well worth listening to so make a note in your diary to come along for a good day and an excellent speaker.

Some, but not all Ormskirk Members will know Margaret Murdin, she has recently moved house to Oxfordshire to be nearer to her family. As a Beekeeper, she started at Ormskirk & Croston doing the basic followed by the modules, her pass rate was exceptional. She won the Wax Chandlers prize and is also a Master Beekeeper, Last year she achieved her NDB so she certainly sits on top of the pile. Nevertheless she is a practical person and keeps 20 colonies herself. She is also Chair of the BBKA Trustees which is quite a challenge for anyone. Margaret lectures in this country and also at Gormanston and her lectures are always a sell-out. If you have a particular topic you would like to hear about, please let me know and I will ask her to arrange to cover that subject.

Bernard Diaper will be one of the judges and John Goodwin will be the second, we will also have a trainee judge from Scotland so lots of tips on presenting from these experts.

Other things at the Show, by popular request there will be a Microscopy bench again, Lotions and Potions by Sue Webster, Ian Mc Lean will be there for photography, A Demonstration of Laser Art, Roses fudge, Cakes of course, and samples of Athol Brose again, (did anyone make some last year) and there will be more to come, in fact Eddie is getting his gazebo ready for the overspill.

I have already received some raffle prizes from beekeeping suppliers and I expect more to come.

Last but not least is the honey show itself, I will be sending out the schedules in the near future, lets see if the new beekeepers do as well this year as they did last year. There are cash prizes to be won the Ken Calverley cup and the Plate for best in show and of course the Blue Ribbon from the BBKA

So come and have a good day out.

Margaret Wilson

Ormskirk and Croston Show Secretary.

## PRESTON BRANCH

### PRESTON BRANCH OFFICERS 2015

Chairman                    Andrew Fowler

Secretary                   Kathryn Wilson

Treasurer                   Paul Noblet

Education  
Secretary                   Alan Manwaring

Membership  
Secretary                   Paul and Wendy  
Noblet

Swarm  
Co ordinator                Dorothy Todd

Swarm  
Coordinator                   Alan Manwaring

Social Secretary          Andrew Fowler

### CHAIRMAN'S ANNUAL REPORT – NOVEMBER 2015

I hope everyone has had a reasonable year in spite of the poor summer and poor honey crop throughout Lancashire. As always the year has thrown up numerous challenges and opportunities for learning and gaining new experiences for all beekeepers. Hopefully we will go into the coming winter in good shape to combat whatever the weather has to offer.

Overall the branch has had another successful year with a variety of activities outlined elsewhere and as always this is due to the help and cooperation of officers and members.

1. **Club Apiary.** The club apiary at Myerscough has achieved much of what it set out to do in the provision of training for new members. Its success has been due to an active Apiary subcommittee. The future development and the direction it takes will be the subject of discussion in the coming months and members are invited to give their views on this topic.
2. **LNWBKA Honey Show.** The branch once again had success at the LNWBKA Honey show. Congratulations are due to Robert McGee for winning the Sir Wroth Lethbridge President's Cup for gaining the highest number of points in show. Congratulations are also due to other members who exhibited and achieved success in various classes namely Paul and Wendy Noblet, Kath Cordingley and Viki Cuthbertson well done to everyone who took part.

3. **PBKA Honey Show.** The branch held its first Honey show this year which I felt was a great success. There were a good number of entries in the varying classes, congratulations to all who came away with a certificate in their chosen category. Well done also to all who entered and just missed out better luck next time. The Andrew Todd Cup was presented to the person with the most points following the judging and that was Val Bradley with Kath Cordingley in second place and Paul Noblett in third place, well done to them all. Thank you to everyone who supported the show and especially to the committee members who planned and organised the show.
4. **Education.** As Education Officer, Alan Manwaring has continued to develop a successful programme of courses aimed at beginners and experienced beekeepers alike. Congratulations are due to the following for passing the following Modules: Viki Cuthbertson (General Husbandry), Laura Burton (Mod 8), June Charnley-Bannister (Mod 1), Rosemary McLean (Mod 1), Paul Noblett (Mod 7) and Alan Manwaring (Mod 5), Congratulations are also due to everyone who passed the Basic Exam: Wendy Noblet, John Ainsworth, Elaine McMillan, Stephen Gregson and Peter Davenport well done to everyone. If anyone is interested in studying for any of the courses next year please contact Alan for details.
5. **Annual Dinner.** We are holding our Annual Dinner on the 22<sup>nd</sup> January 2016, 7.30 pm at Preston Grasshoppers. Please bring your wives, husbands, partners, friends etc. and take this opportunity to have an enjoyable evening, chat with fellow beekeepers and make new resolutions about how you might manage your bees in the year ahead.
6. **Website Manager.** The new website will be ready to use early in the New Year and looks very professional and more user friendly than our current one. Mattia who some of you have met was the gentleman who created the new website and was going to manage it on a regular basis if elected but alas he will be leaving the country to start his new job in Sydney, Australia at the end of November. I will be in regular contact with him until the website is fit for purpose and for any snags that occur during our day to day use. I will continue as website manager unless someone else wishes to take over.

Finally I would like to thank all those members who, in any way, have helped to make 2015 a successful year for the Branch. The Officers and members of sub committees deserve special mention.

I hope the reports of the Secretary, Treasurer, Education Secretary and Apiary manager will add some detail to my report and demonstrate that the branch is alive and well.

A H Fowler  
November 2015



## **Preston and district Beekeeping Association. Club Meetings 2016**

For information/directions or confirmation that meeting is happening ring Val Bradley on 01772-434189 or Viki Cuthbertson on 01772 - 717001 Please bring protective clothing to Hive Openings Saturday mornings at 10.30am, Hive Inspections at the Club Apiary. Summer only.

### **Programme for 2016**

**February** 19<sup>th</sup> Friday - End of Winter Management & Planning for Spring, Speaker Geoff Critchley, 7.30pm Galloways Centre, Howick Park Ave, Penwortham. PR1 OLS

**March** 18th Friday - Swarm Prevention & Control, Speaker Wally Shaw, 7.30 at Church of the Latter Day Saints, Longsands Lane Fulwood PR2 9PS.

**April** 23rd Saturday- Practical Swarm Control, Speaker Viki Cuthbertson, 2.30pm at Apiary, Myerscough College.

**May** - Hive Openings/ Bee Discussions.

May 7th at Viki Cuthbertsons, 2-4pm,.

May 21st Practical Testing for Diseases, Speakers Paul Noblett and Viki Cuthbertson, at Apiary, Myerscough College or Longsands Lane. TBC

### **June - Hive Openings**

June 5th Sunday Hive Opening ,at Sheila and Nick Birkbys Goosnargh, 2-4pm,. June 16th Sunday Preparing for a Honey Show, Speaker John Goodwin, 7.30pm at Galloways Centre, Howick Park Ave , Penwortham PR1 OLS.

June 19th Sunday. Hive Opening and demonstration on making up Brood and Super boxes,at the home of D Todd, Great Nelson Farm, Ulnes Walton Lane, Leyland PR26 8LT. 2.pm

### **July - Hive Openings**

July 2nd Saturday at Apiary, Myerscough College., Hive Opening, Looking at Top Bar, Dartington & WBC Hives - Speaker Viki Cuthbertson.

July 17th Sunday Hive Opening and demonstration Talk by Bill Helm, at the home of D.Todd, Great Nelson Farm Ulnes Walton Lane, Leyland. PR26 8LT - 2.pm. Speakers Bill Helm. July 24th Sunday Summer Buffet and Garden Games, at the home of Val Bradley Norris's Farm, Ulnes Walton Lane, Leyland 2.pm

### **August - Hive Opening**

August 7th Hive Opening at V.Bradleys, Norris's Farm, Ulnes Walton Ln ,Leyland PR26 8LT, 2-4pm, August 14th Sunday Hive Opening and demonstration. Speakers Bill Helm at the home of D Todd, Great Nelson Farm, Ulnes Walton Lane, Leyland.

August Extracting Honey - Longsands Lane Fulwood Preston, PR2 9PS. Practical Demonstration on using club extractors.

**September**, Getting ready for Winter, Speaker David Raynor, 7.30pm Galloways Centre,, Howick Park Ave, Penwortham. PR1 OLS

**October** - PBKA Honey Show and Guest Speaker TBC, 9am-4pm Longsands Lane, Fulwood Preston PR2 9PS. Please see - Honey Show.

October "Introduction to Beekeeping" Course begins.

**November** 11<sup>th</sup> - Friday Branch AGM and Speaker, - 7.30pm @ Longsands Lane Fulwood PR2 9PS

**January** 20th 2017 - Annual Dinner - 7.30 @ Preston Grasshoppers.

## SOUTHPORT AND FORMBY BRANCH

### SOUTHPORT AND FORMBY OFFICERS 2016

#### **Branch Officers**

Chair- John Turner

Vice-Chair - Chris Cooper

Secretary - Anita Mc Donnell

Treasurer - Julie Peeks

Education Coordinator - John Turner

Central Council Representatives - John Bryan & Tony Lee

Web Master - Ian Turner-Bone

Swarm Liaison Officer - John Bryan

Librarian - Eileen Carson

Liaison Officer for Southport Flower Show - Sue Scott

Spray Liaison Officer - Tony Lee

Auditor - Rosemary Turner

#### **Chairman's Report, Southport and Formby Beekeepers. 2014-15**

My thanks go to the committee. Without the interest and enthusiasm of those who have given their time to our branch we would not have had such a good year. Thanks especially to Anita who has kept us together so well and to Julie who has maintained the society's money in such good order.

We have been successful in many spheres. Our new members have been trained at our well-coordinated training at Homer Green. This provides a solid foundation for new beekeepers and also provides the society with a healthy income. Without singling out anyone in particular, my thanks go to those who delivered the course, ran the complex administration and provided such top-quality food and refreshments.

Many thanks to Anne Belcher and Ian Turner-Bone for continuing to make the training sessions work successfully. Our six colonies have enjoyed varying success this year, but have, with many members' colonies decided to make bees and not much honey this last season.

I have taken up the role of Education Officer this year after the resignation of Adrian Head-Rapson. We thank him for taking up the job 2013-2014.

Julie Peeks has run the treasury with her usual attention to detail and easy-going approach. An unusual balance in areas associated with money. We have also benefited from her ordering supplies from Thorne's and Wynne-Jones' for our members, and for ordering fondant. Another service which we have been able to offer as a branch to its members.

Our membership is healthy. Mentoring has been well-managed and it is my hope that those who have been mentored during the 2015 season will, in turn, mentor those new members that we will welcome in 2016. Our membership has not grown this year and we have been in the position to offer good support for our new members. I would like to take this opportunity to say thanks to those more experienced people who have acted as bee buddies.

Bee keeping has been in the media and we received many inquiries via our website. Thanks goes to Kirk Harrison and Ian Turner-Bone who have maintained our Facebook page and rebuilt our website. If you have had a chance to see our new website, I am sure that you will congratulate Ian on the depth and breadth of the materials which he has crafted into the site.

Southport Bees- famous for its hospitality, has hosted some lovely meetings. I thank those members who have generously welcomed others into their homes and gardens. We have enjoyed a few well attended meetings with outside speakers and queen rearing and swarm control from myself.

Southport Flower Show- another success- in a new a better location, but coordinated jointly by Sue Scott and Barbara Roderick in their usual positive and efficient way. Lots of interested visitors and well-

manned by members and spouses. Dare I say, one of the better shows? Thanks again to them both for running our own honey show! On behalf of all of Southport beekeepers who were able to sell their honey directly to the public at the show. May I also take this opportunity to thank Julie and Anita and their fantastic team for organising this.

Our society is only as good as we make it. We all have responsibility to make the most of it. Please do put yourself forward as a member of the committee. We do need ideas and inspiration and enthusiasm and your skills shared. I wish you all a happy and successful beekeeping year in 2016 and hope you're honey is sweet and copious.

J.E. Turner November 2015

### **Secretary's Report for 2015**

This has been a year of mixed success stories for our beekeepers, both new and experienced, with reports of early swarms and unusual bee behaviour which have affected many colonies and honey production. Honey crops have, in the main, decreased this year for many of our members.

There was an organised program of events for the year which began with our customary Annual Dinner at Don Luigi's Restaurant in Formby.

Early in the year, in our drive to contain varroa levels, John Turner demonstrated the application of oxalic acid at the branch apiary and members were able to take syringes of oxalic acid to treat their own colonies.

We held a successful branch Apiary Work Party event in March at Homer Green where the apiary was maintained. Members worked hard to tidy the apiary and were rewarded with a shared lunch and a chance to 'catch up' with others.

In March, Margaret Murdin gave a very interesting talk on the subject of the 'waggle dance'. Members who have heard Margaret speak comment on how they always learn something new despite how many times they have listened to her informative talks.

In May, John Turner, along with other members, led a swarm management training session with the new beekeepers, and covered aspects such as frame manipulations and checking for colony health.

Also this month, we held our Annual 'Introduction to beekeeping' Course for interested and new beekeepers with course candidates completing the weekend course at John Turner's house. Many of the candidates continued to learn about beekeeping at the branch apiary sessions which followed. Special thanks go to those who gave up their time to either deliver a training module or to chat and welcome the candidates.

It had been planned to do a 'Bee Disease Day' in May with Ian Molyneux, but due to poor health, this event unfortunately had to be cancelled.

John Goodwin gave a talk to members in June on staging honey and show preparations. His knowledge of beekeeping, honey production and showing was well received by those who attended.

The highlight of our event calendar, 'The Southport Flower Show', was huge success for 2015 and many members supported the branch for this event. The high quality of exhibits were greatly appreciated by the visitors to the Honey marquee. Our sincere thanks go to Sue Scott and Barry Milne, along with Barbara and Mal Roderick, who generously give so much of their own time and effort into sorting all the organisational details for this event to run so smoothly.

In September, branch members had a lovely summer's afternoon at the 'Glut Swap' event in Eileen & Gerry Carson's beautiful garden in Lydiate, where some wonderful produce and chatter was 'swapped'...a perfect finish to the year!

And so to the future... as long as we keep supporting the branch and continue learning more about beekeeping whether it be through studying for BBKA modules or listening to talks from experienced beekeepers, even just speaking with other members, or by visiting our newly designed website (thanks to Ian Turner-Bone), then this can only be a good thing.

Grateful thanks to everyone who has helped to support our branch in any way this year. It is really appreciated. Thank you!

Anita McDonnell November 2015

## **Southport Flower Show 2015**

This year we had 45 people who volunteered from Southport, Ormskirk and Liverpool Beekeeping Associations to man the huge variety of jobs required to stage the Bee and Honey Marquee. The jobs start on Monday and run through till Sunday. They range from setting up the tent, creating the staging, laying out the classes, decorating, production and sales of the recipe book, security, judges steward, sharing of knowledge, manning the shop and demonstrating.

We had new shirts this year which were popular and the new system of booking in and out at our tent, rather than the main office, went well. Our volunteers preferred the system of cash for meals, rather than vouchers, offering greater flexibility.

Although the number of entries in the classes was lower than last year, the standard was still very high. The judges worked hard to grade the entries and were pleased with the winners within the wide range of classes.

The Flower Show attracted around 70,000 visitors, many of whom visited our tent, having a greater footfall than last year. The various demonstrations were greatly enjoyed and the public thanked us for the interesting variety and learning experiences within the tent.

The Dry Stone Wall Association joined us this year to make a wall with a recess for a bee skep. This will eventually become a permanent feature on the showground.

Many, many thanks to everyone for your contribution to a very successful show and especially to Barbara Roderick for heading up the team.

Sue Scott November 2015

## **EVENTS FOR 2016**

30 March - Guest speaker, Geoff Critchley '30 years of Beekeeping mistakes' at 6.30pm at Merlin's Cafe Bakery (Unit 703 Merlin Park, Ringtail Road, Burscough L40 8JY)

7-8 May -New to beekeeping course at Merchant Taylors' Boys' School, Crosby. Followed by education sessions in the branch apiary at Homer Green

July - Guest speaker (Date/venue - To be confirmed)

18-21 August - Southport Flower Show

Sept - Combined Glut swap with guest speaker (Date/venue -To be confirmed)

For further events and updated information, please visit our branch website:

[www.bbka.org.uk/local/southportandformby/](http://www.bbka.org.uk/local/southportandformby/)

**Practical Information**

***Feeding bees***

Heavy or thick syrup is given to bees when they need to store food, that is, in preparation for winter. Light syrup is thought by some beekeepers to stimulate a colony in the spring. Syrup must only be given when bees have stopped flying for the day. Reduced entrances can help avoid robbing. Never spill syrup in the apiary.

Candy can be placed directly on the cluster of bees when stores have been used and they are not flying.

Only use white sugar with no additives (unless treating for Nosema).

**Recipes:**

***Heavy Syrup 1:2***

2lbs sugar/1 pint water

7kg sugar/4 litres water

Heat carefully until crystals are dissolved and allow to cool

***Light syrup 1:1***

Amount of sugar to water is halved

Heat carefully until all crystals are dissolved and allow to cool

***Candy***

Proportions by volume:

5 sugar

1 water

Heat carefully to 117<sup>0</sup>C (243<sup>0</sup>F). This will be after boiling for about 3 minutes. Cool container in a sink of cold water if possible, stirring until the mixture thickens and whitens. Pour into a suitable container.

**Note: Never feed foreign honey** as it might contain bee viruses.

***Labelling Honey for Sale***

Some beekeepers sell honey only occasionally in small and variable amounts depending on the size of the harvest and the honey surplus to their own requirements each year. Others, with a greater number of hives may regard their beekeeping as a sideline from which financial return is required and may be supplying various retail outlets on a regular basis. Other beekeepers would like to sell honey but feel that the many laws pertaining to this are so complex that they would be unable to comply, or that there is a fear of inadvertently falling foul of the law.

Advisory leaflet No. 103: So You Wish To Sell Honey, attempts to set out and clarify the requirements. This leaflet may be obtained from:

BBKA The Bee Centre, National Agricultural Centre, Stoneleigh, Warwickshire, CV8 2LZ.

## LANCASHIRE & NORTH WEST BEEKEEPERS ASSOCIATION

### LOCAL AND NATIONAL FORTHCOMING EVENTS 2015

5 <sup>th</sup> March 2016	Lancashire Annual Convention
8 <sup>th</sup> -10 <sup>th</sup> April	BBKA Spring Convention at Harper Adams University Shropshire
18 <sup>th</sup> April 2016	LNWBKA AGM and Central Council meeting
18 <sup>th</sup> – 21 <sup>st</sup> August	Southport Flower Show
10 <sup>th</sup> – 11 <sup>th</sup> September	LNWBKA Honey Show Brockholes Nature Reserve
16 <sup>th</sup> September	Central Council Meeting
24 <sup>th</sup> September	Ormskirk and Croston Honey Show
27 <sup>th</sup> – 29 <sup>th</sup> October	85 <sup>th</sup> National Honey Show, St George's College Weybridge, KT15 2QS

### Dates for 2017

11 <sup>th</sup> March 2017	LNWBKA Spring Convention
-----------------------------	--------------------------

### INTERNATIONAL QUEEN MARKING COLOURS

Year ending 1 or 6	White
2 or 7	Yellow
3 or 8	Red
4 or 9	Green
5 or 0	Blue

The series can be remembered by the following mnemonic:

**When You Requeen Give the Best**

## **HONEY RECIPES**

### **HONEY MALT LOAF**

Contains no eggs AND no fat

- 10oz self raising flour
- 1 cup mixed dried fruit
- 1 cup sugar
- 1 cup milk
- 1 tablespoon treacle
- 1 tablespoon of honey

Mix all the ingredients together thoroughly. Put into a lined greased 2lb loaf tin. Bake for approx 1 hour at 180c. Eat warm as it is or sliced and buttered when cold

### **HONEY BUNNIES**

- 1 tablespoon honey
- 3oz butter
- 3 oz sugar
- 3 oz plain flour
- 1/2 level teaspoon bicarbonate of soda
- 3oz plain flour
- 3oz porridge oats

Melt honey, butter and sugar. Add dry ingredients and mix well. Place small balls on greased baking tray allowing room to spread. Bake for 10-15 mins at Gas Mark2/ 150c.

### **HONEY WALNUT CAKE**

- 4oz butter
- 8oz honey
- 2 eggs
- 5oz self raising flour
- 2oz chopped walnuts

Cream butter and honey. Add eggs and beat well. Fold in flour and walnuts. Place in greased and lined tin and bake at 170c for approx 1 hour.

## **HONEY DATE AND WALNUT CAKE**

Oven Temp F 140 degrees Conv 160 degrees Gas 3

1 2 lb loaf tin lined with greaseproof paper.

Ingredients

225g Self Raising Flour

1/2 tsp ground cinnamon

175 softened butter

100g light muscovoda sugar

3 tbs clear honey

2 eggs beaten

2 med ripe bananas (9oz 250g)

100g stoned dates

50g walnuts pieces

Tip Flour, Cinnamon, Butter, Sugar and 2 tbs honey onto a large bowl.

Mash bananas and chop date (scissors are best for this) and add to bowl. Beat for 2/3 minutes until well blended.

Spoon into tin, scatter the top with walnuts, bake for 1 hour, test to see if cooked using a dry skewer.

Turn out onto a wire rack, when cold drizzle remaining honey over cake.

Cut into thick slices to serve.

## **HONEY SHORTBREAD**

6 tablespoons set honey

275g (10oz) plain flour

225g (8oz) butter

Cream the honey and butter until very smooth & soft

Sift the flour and stir into the creamed mixture

Press the mixture into a greased tin – 19 x 34 cm (7"x13")

Chill thoroughly, then prick all over with a fork & mark into fingers or squares

Bake at 160C/325F/gas 3 for about 40 mins

When golden and cooked, remove from oven and cut fully through marked lines

Leave to cool, if you can!



### **HONEY MUSTARD GLAZE**

3oz butter  
1 tablespoon honey  
2 teaspoons mixed grain mustard

Soften butter and mix with honey and mustard Season Can be used to glaze carrots, parsnips, sausages, chicken etc before barbequing or roasting

### **PLAIN HONEY CAKE**

227g self-raising flour  
227g honey  
133g butter  
2 eggs  
pinch of salt

Cream together butter and honey.

Beat eggs well and add alternately with sifted flour and salt. If needed, add a little milk.

Bake in a lined greased tin in a moderate oven for approximately 1 ¼ hrs  
(165 - 190mm diameter tin)

### **HONEY FRUIT CAKE**

227g self-raising flour  
227g honey  
113g butter  
113g chopped cherries  
113g sultanas  
57g mixed peel  
2 eggs  
pinch of salt and nutmeg  
milk as required

Cream together butter and honey.

Beat eggs together and add alternately with the flour and salt. Add fruit, peel and nutmeg. Beat lightly but well. Add a little milk if required.

Turn into a prepared tin (165 - 190mm diameter)  
and bake for approximately 2 ½ hrs. in a moderate oven.

### **HONEY FRUIT SCONES**

448g Self Raising flour  
112g margarine or butter  
84g sugar (caster)  
28g honey  
2 eggs  
3 tbsp milk  
¼ tsp salt  
84g fruit

Sieve flour and salt into bowl. Rub Flour, Marg/butter & Sugar together.

Whisk Eggs Honey & Milk. Add this to the mixing bowl to make a smooth dough. Add fruit. Turn out onto a floured board and knead until dough is smooth.

Roll lightly to ¾ inch thick. Cut out circles and put on floured tray. Glaze with egg. Bake on top shelf for 15 minutes at 400<sup>o</sup>f / 200<sup>o</sup>c